



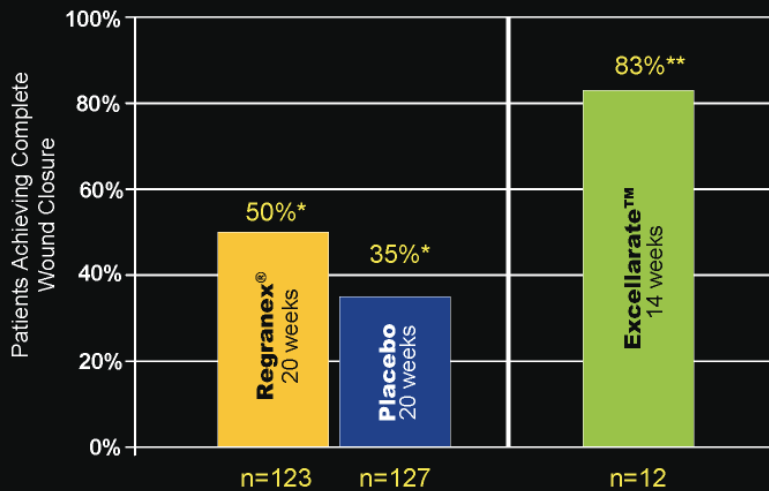
# TISSUE REPAIR COMPANY

An Operating Unit of Cardium Therapeutics, Inc.

## Investor Fact Sheet

The Tissue Repair Company (TRC), is a San Diego-based company focused on the development of growth factor therapeutics for the treatment of chronic diabetic wounds of the lower extremities. TRC's Gene Activated Matrix (GAM) technology provides a therapeutic level of protein synthesis at the site of tissue injury and has potential utility in several clinical indications where protein therapeutics have had limited success, including the treatment of dermal wounds (diabetic ulcers, venous stasis ulcers), therapeutic angiogenesis (cardiovascular ischemia, peripheral arterial disease), and orthopedic products, including hard tissue (bone) and soft tissue (ligament, tendon and cartilage).

### Clinical Data: Complete Wound Closure Rates Regranex® vs. Excellerate



\* Smiell, JM, Wieman, TJ, Steed, DL, Perry, BH, Sampson, AR, Schwab, BH Efficacy and safety of becaplermin (recombinant human platelet-derived growth factor-BB) in patients with nonhealing, lower extremity diabetic ulcers: a combined analysis of 4 randomized studies. Wound Repair and Regeneration 1999; 7:335-46.

\*\*Data from Phase 1/2 clinical trial



#### Stock Symbol:

AMEX: CXM

#### Capitalization:

Outstanding: 45.3 Million

Float: 37.4 Million

CUSIP: 141916106

#### Recent Stock Price (11.12.08):

\$1.06

#### Market Capitalization:

\$49.75 Million

#### Corporate Office:

12255 El Camino Real

Suite 250

San Diego, CA 92130 USA

Tel: 858-436-1000

Fax: 858-436-1001

#### Email:

[investorrelations@cardiumthx.com](mailto:investorrelations@cardiumthx.com)

#### Websites:

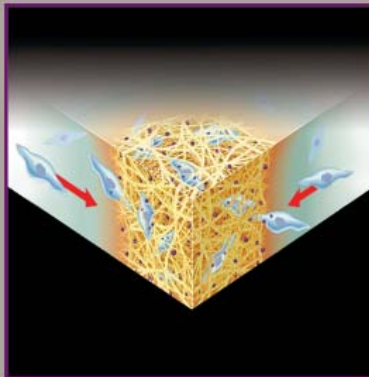
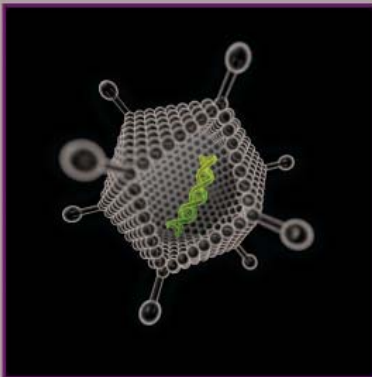
[www.t-r-co.com](http://www.t-r-co.com)

[www.cardiumthx.com](http://www.cardiumthx.com)

[www.diabeticfootstudy.com](http://www.diabeticfootstudy.com)

#### Excellerate - Phase 2b Product Candidate

Gene Activated Matrix (GAM) technology is designed to provide localized and sustained cellular release of therapeutic proteins at the injury site



Over 20 million people in the U.S. have diabetes and every day approximately 2,200 new cases are diagnosed. Fifteen percent of patients affected with diabetes will develop foot-related ulcers. Ulcers that do not heal leave the patients susceptible to infection and may lead to amputation of the foot or leg. Diabetes is the leading cause of lower extremity amputations with 5% to 15% requiring an amputation at some time in their lives. The three-year survival rate following amputation is only 50%.

The Excellerate topical gel product candidate uses TRC's Gene Activated Matrix™ (GAM) technology that is designed to provide localized and sustained cellular release of platelet-derived growth factor-BB protein. Providing sustained delivery of PDGF-BB directly at the wound site is believed to stimulate angiogenesis and granulation tissue formation through the recruitment and proliferation of chemotactic cells such as monocytes, endothelial and fibroblasts, which are necessary for the stimulation of a variety of wound healing processes.

### PHASE 1/2 CLINICAL TRIAL

Excellerate has been studied in an initial multi-center Phase 1/2 clinical trial that evaluated preliminary safety and included an assessment of wound closure in 15 patients having diabetic foot ulcers that did not heal using conventional techniques. Results from this study showed that Excellerate appeared to be safe and well tolerated by patients with diabetic foot ulcers. In addition, in the 12 patients who completed the treatment protocol and follow-up, over 80% of the patients exhibited complete closure of previously non-healing wounds, with the majority healed by 14 weeks. Single dose applications were administered in 70% of these patients and the remaining patients received a weekly dose application for up to four weeks.

### PHASE 2b CLINICAL TRIAL

Cardium has advanced Excellerate to a Phase 2b clinical trial. The MATRIX (GAM501 for the Treatment of Diabetic Ulcers in the Lower Extremities) clinical trial will be a randomized, double-blind, placebo-controlled, comparator arm, multi-center clinical study. The study is expected to enroll up to approximately 210 patients at an estimated 30 U.S. medical clinics.

## EXCELLERATE PRODUCT CANDIDATE PHASE 1/2 CLINICAL STUDY

**Patient Number/  
Pre-Treatment**

**Number of Weeks/  
Post-Treatment**



**Subject #445\*\***



**11 weeks**



**Subject #113\***



**6 weeks**



**Subject #221\***



**14 weeks**



**Subject #442\*\***



**12 weeks**

\*Single application

\*\*Multiple applications